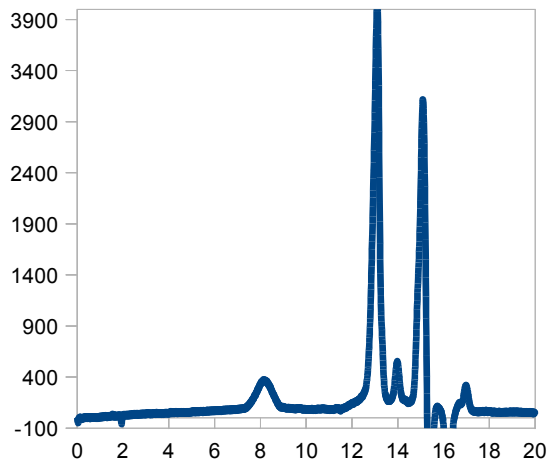


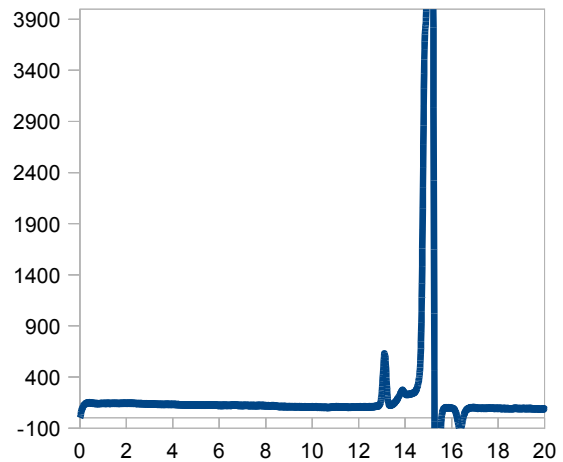
AppliChrom® ABOA-ProteSep S-S 5µ

AppliChrom® Chromatography columns for highly efficient size exclusion chromatography (GPC/SEC) of biopolymers, For example - pectins.

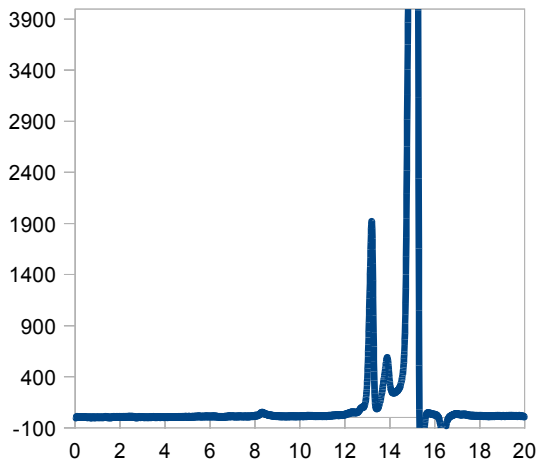
Pectins are polysaccharides from plants. Pectins are used in several food, pharma and/or cosmetics applications. Pectins are not wanted in many products or Applications. Pectins can, for example, reduce the ease of filtration process of fruit juices.



AppliChrom® ABOA ProteSep S-S 5µ 300x8mm,
1ml/min 0.05M NaNO₃/H₂O, RI-detection:
HPLC/GPC investigation 20µl sample:
Lemon peel extract: 8min - pectins



AppliChrom® ABOA ProteSep S-S 5µ 300x8mm,
1ml/min 0.05M NaNO₃/H₂O, RI-detection:
HPLC/GPC: 20µl sample: fresh „self made“
apple juice



AppliChrom® ABOA ProteSep S-S 5µ 300x8mm,
1ml/min 0.05M NaNO₃/H₂O, RI-detection:
HPLC/GPC sample: 20µl commercial clear apple
juice: 8min: pectins

- AppliChrom high purity HPLC columns
- Excellent separation, long lifetime
- Application specific consultation included
- Short delivery times, good value for money

Analysis:

Pectins and pectin containing products were investigated by size exclusion chromatography (SEC) respective gel permeation chromatography (GPC) in aqueous solution. The pectins were separated according to their molecular size that corresponds to the molecular weight.

The small porous AppliChrom® ABOA ProteSep S-S 5µ column is suited for GPC/SEC analysis of pectin containing products. With the large porous AppliChrom® ABOA ProteSep S-L 5µ column additional the molecular weight distribution of high molecular weights can be investigated.